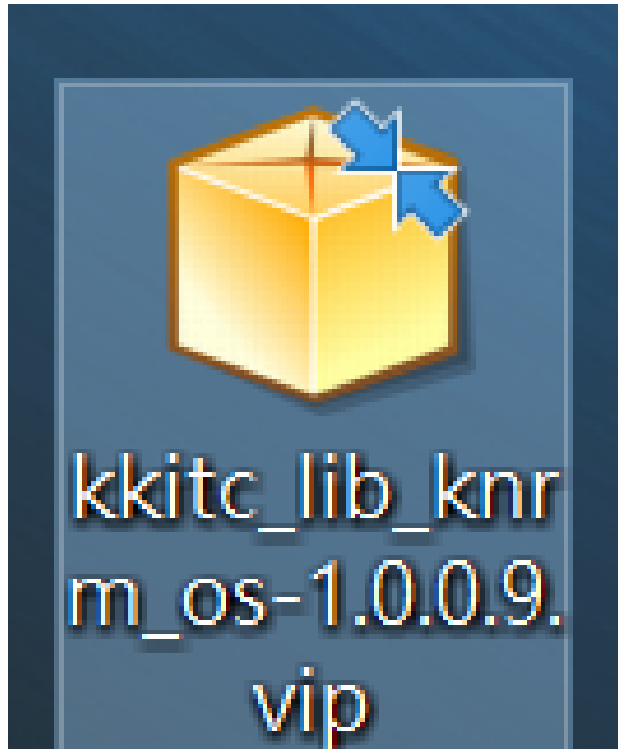


# KNR O.S. 安裝步驟

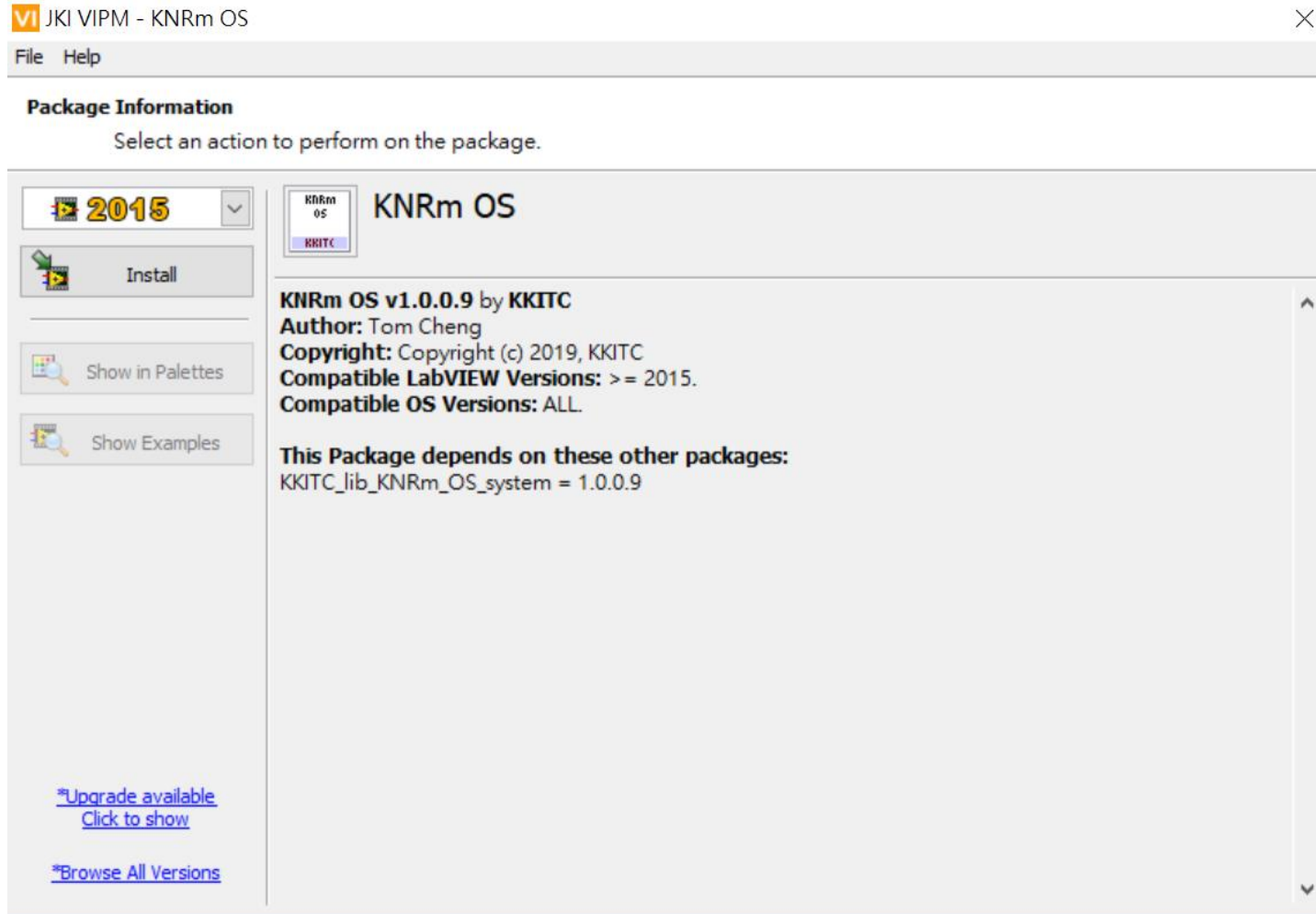
2021.8

# 步驟一



- 首先，確定LabVIEW已確定安裝完畢，接著便開始安裝KNRm OS
  - 請開啟kkitc\_lib\_knr\_m\_os-X.X.X.X.vip
- ※ X.X.X.X為版本編號
- ※ 安裝過程電腦將自動開啟LabVIEW，在安裝過程中請勿關閉

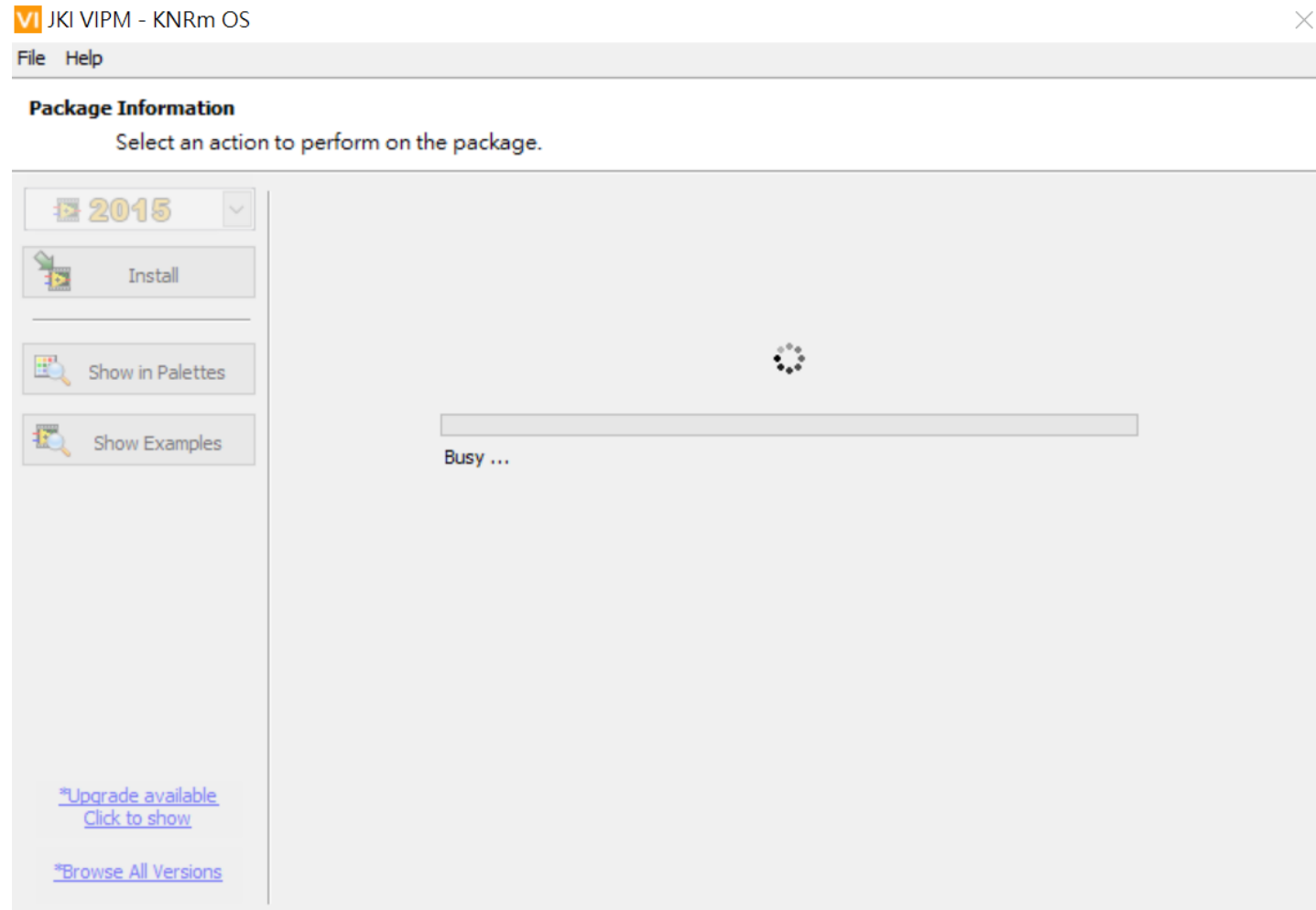
# 步驟二



The screenshot shows the LabVIEW Package Manager window titled "JKI VIPM - KNRm OS". The interface includes a menu bar with "File" and "Help". Below the menu bar is the "Package Information" section, which contains the instruction "Select an action to perform on the package." On the left side, there is a sidebar with a version selector set to "2015" and three buttons: "Install", "Show in Palettes", and "Show Examples". The main area displays the package details for "KNRm OS" by "KKITC". The details include: "KNRm OS v1.0.0.9 by KKITC", "Author: Tom Cheng", "Copyright: Copyright (c) 2019, KKITC", "Compatible LabVIEW Versions: >= 2015.", and "Compatible OS Versions: ALL.". Below this, it states "This Package depends on these other packages:" followed by "KKITC\_lib\_KNRm\_OS\_system = 1.0.0.9". At the bottom left, there are two links: "\*Upgrade available Click to show" and "\*Browse All Versions".

- 點選Install

# 步驟三



- 等待安裝

# 步驟四

LabVIEW FPGA Advanced Interface Tools Installer

## LabVIEW FPGA Advanced Interface Tools

1. Installs FPGA Interfaces to user.lib/\_FPGA Interface Advanced Tools.

2. Installs menus, palettes, and error codes.

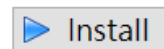
Copyright (c) 2011, National Instruments

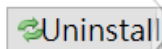
All rights reserved.

Redistribution and use in source and binary forms, with or without modification, are permitted provided that the following conditions are met:


- o Redistributions of source code must retain the above copyright notice, this list of conditions and the following disclaimer.
- o Redistributions in binary form must reproduce the above copyright notice, this list of conditions and the following disclaimer in the documentation and/or other materials provided with the distribution.
- o Neither the name of the National Instruments Corporation nor the names of its contributors may be used to endorse or promote

I accept the license agreement.





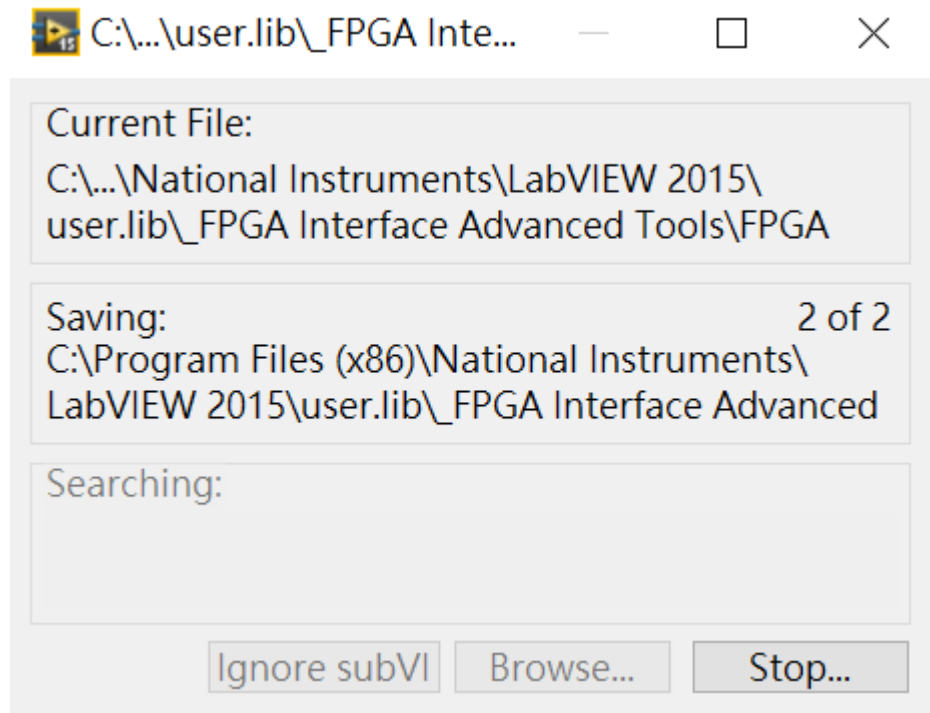




LabVIEW™ Home and Student Edition

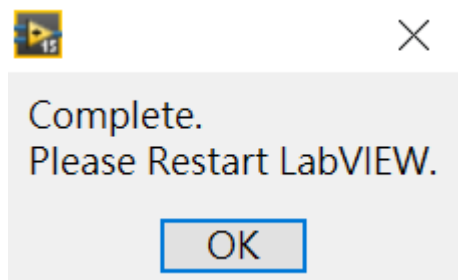
- 彈出LabVIEW FPGA Advanced Interface Tools視窗
- 請勾選I accept the license agreement
- 點選Install

# 步驟五



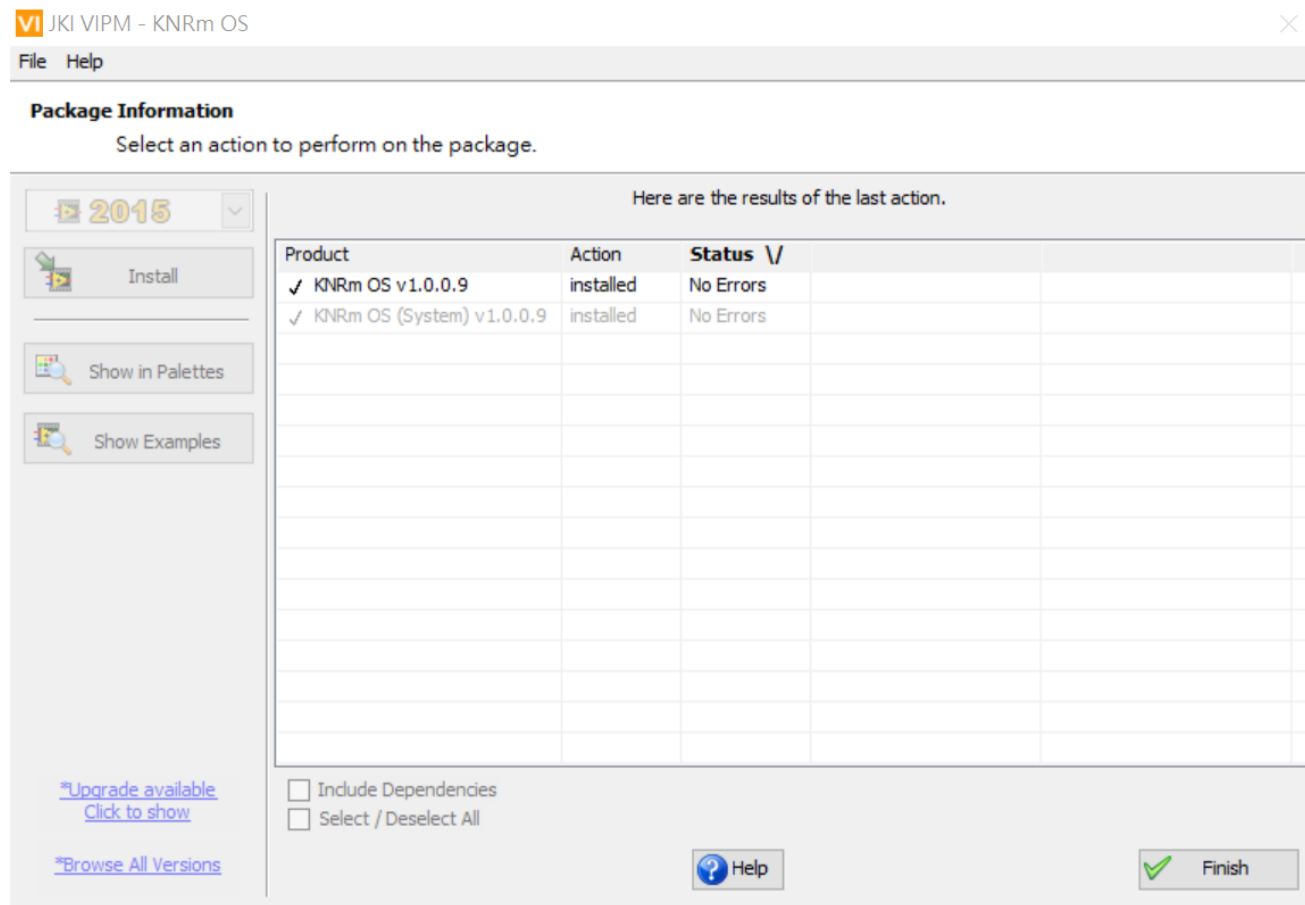
- 等待安裝

# 步驟六



- 安裝完成請點選OK

# 步驟七



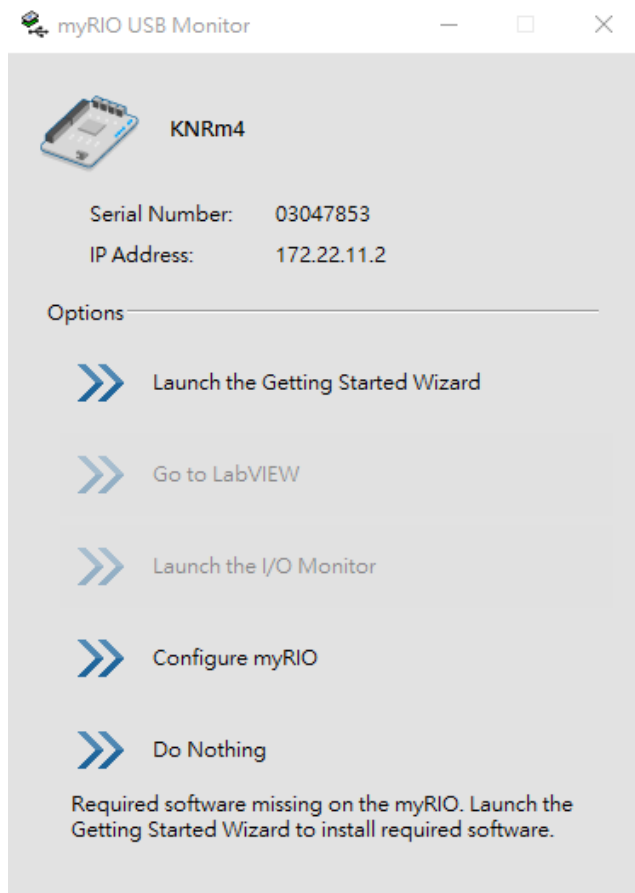
- 安裝完成
- 重新開啟LabVIEW後便可使用





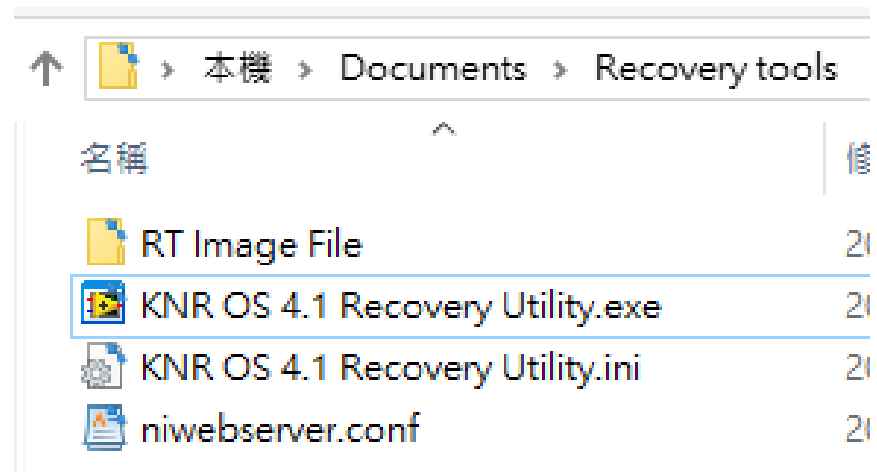
# KNR 韌體安裝

# 步驟一



- 確認KNR已連接上電腦並且開機
- 直到跳出左圖畫面進行步驟二

# 步驟二



- 在Documents\Recovery tools中可以找到 KNR OS 4.1 Recovery Utility.exe

# 步驟二



- 開啟KNR OS 4.1 Recovery Utility.exe後會自動搜尋KNR的IP，選定要安裝韌體的KNR之後點選NEXT

# 步驟三



- 開始安裝，如果安裝成功請到[步驟四](#)
- 如果沒有成功請到[步驟六](#)

# 步驟四

KNR OS 4.1 Recovery Utility [14830]

## KNR OS 4.1 Recovery Utility

Online Remote Device

KNRm4 (172.22.11.2)

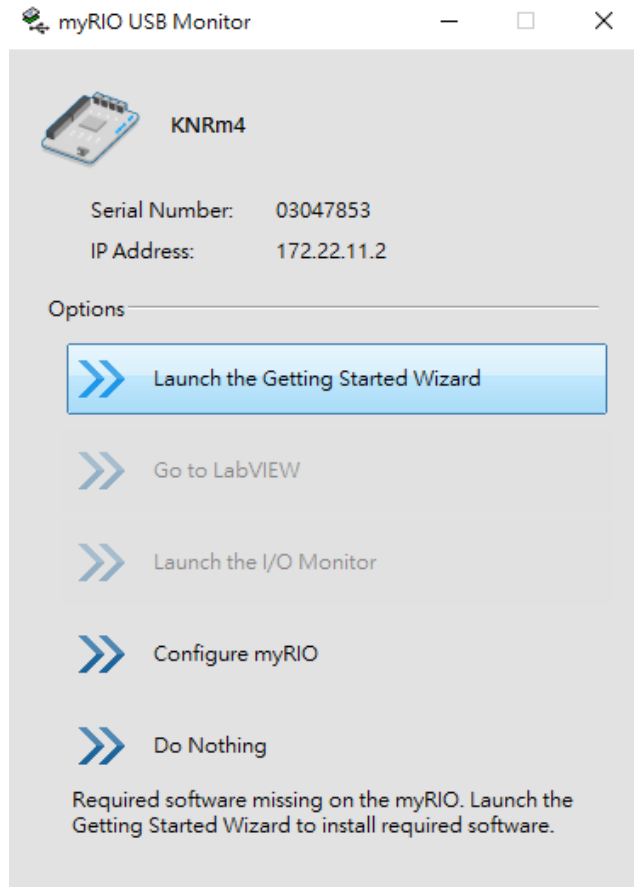
KNRm Image File is installed successfully.  
Current version is unknown.  
Please click FINISH button to close the program.

Recovery complete.



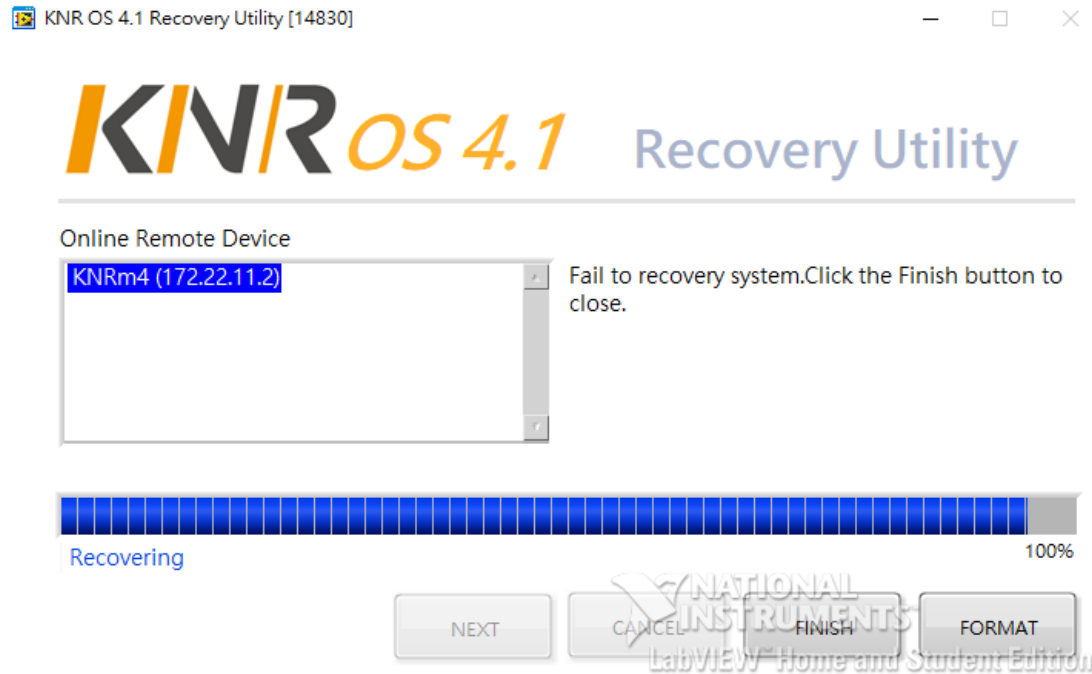
- 完成安裝後點選FINISH，並將KNR重新開機

# 步驟五 (完成)



- 出現此畫面後點選Launch the Getting Started Wizard，接著順跑完便完成安裝了。

# 步驟六



- 如果出現此畫面請點選FORMAT



# 步驟七

KNR OS 4.1 Recovery Utility [14830]

## KNR OS 4.1 Recovery Utility

Online Remote Device

KNRm4 (172.22.11.2)

Starting formatting. Please wait for 2 minutes or more.

Formatting remote device.



NEXT

CANCEL

FINISH

FORMAT

- 等待裝置FORMAT

# 步驟七



- FORMAT完成之後點選FINISH回到步驟二