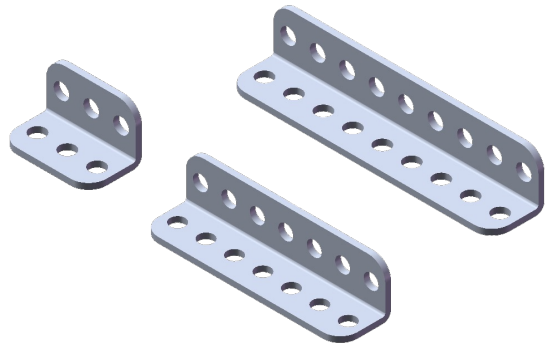




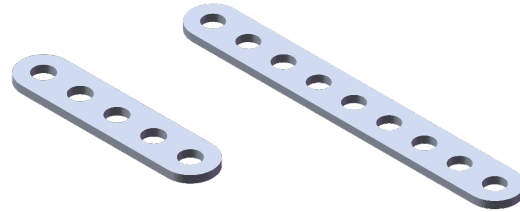
# MATRIX Building System

# Beam

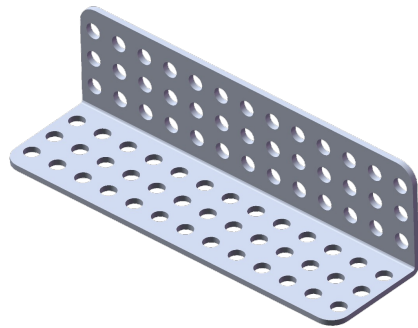
L Shaped Beam



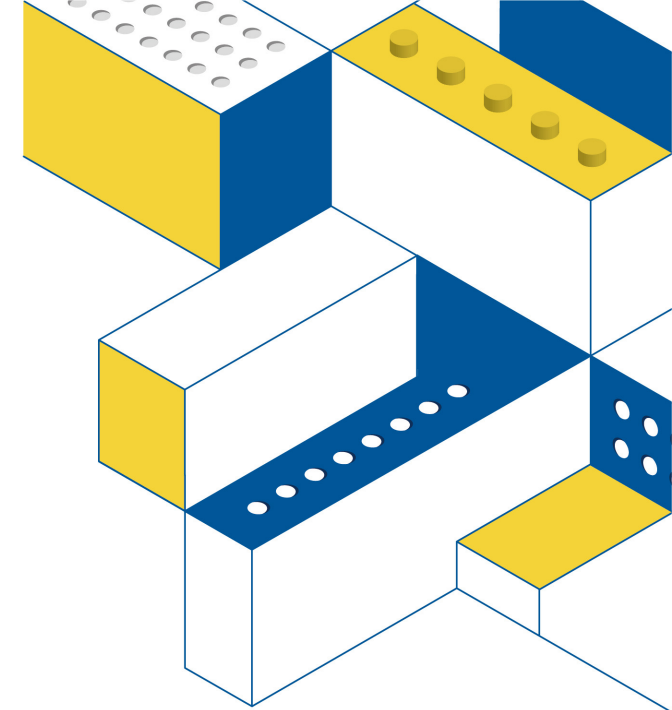
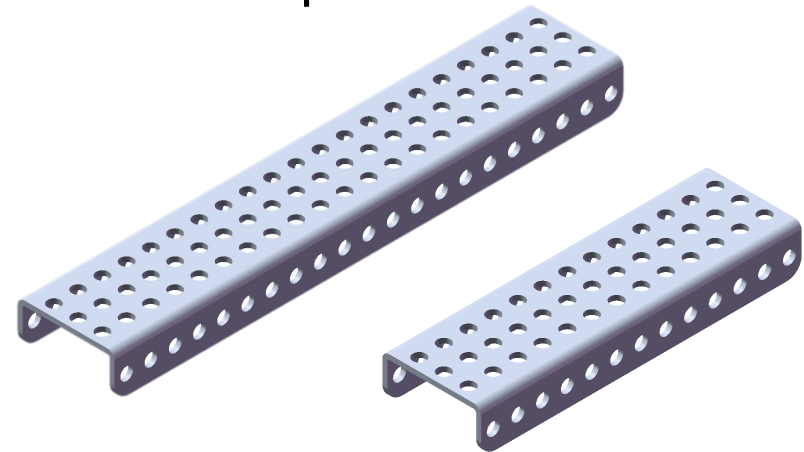
Flat Beam



XL L Shaped Beam

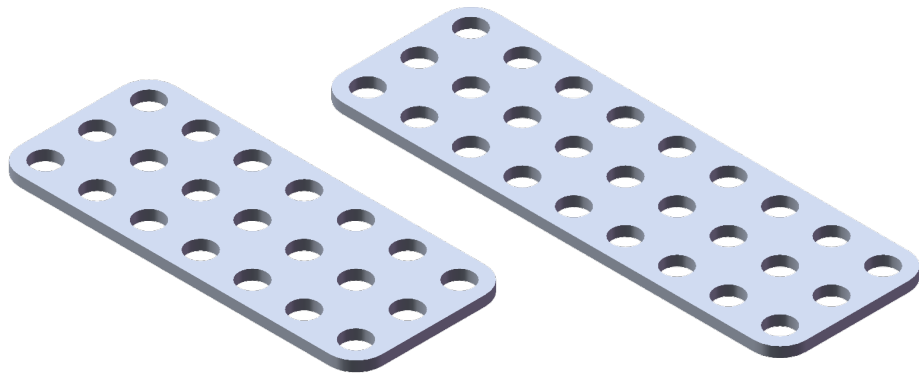


C Shaped Beam

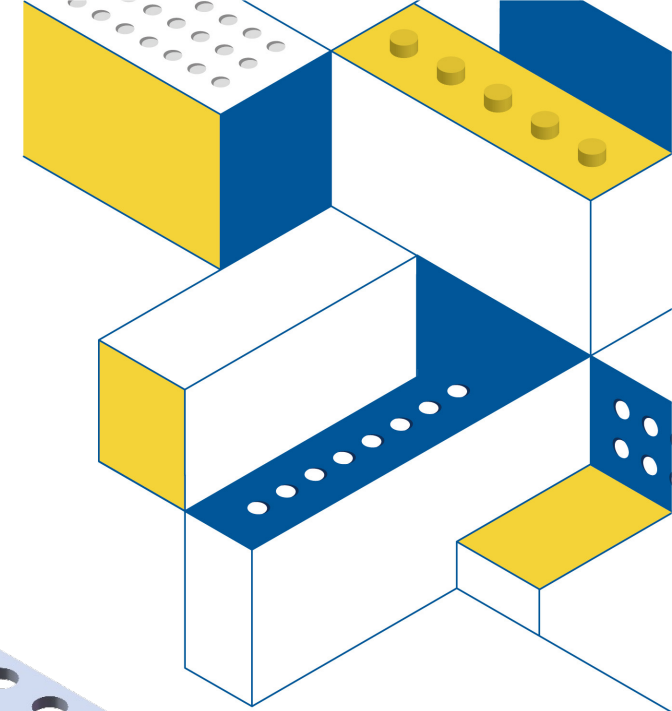
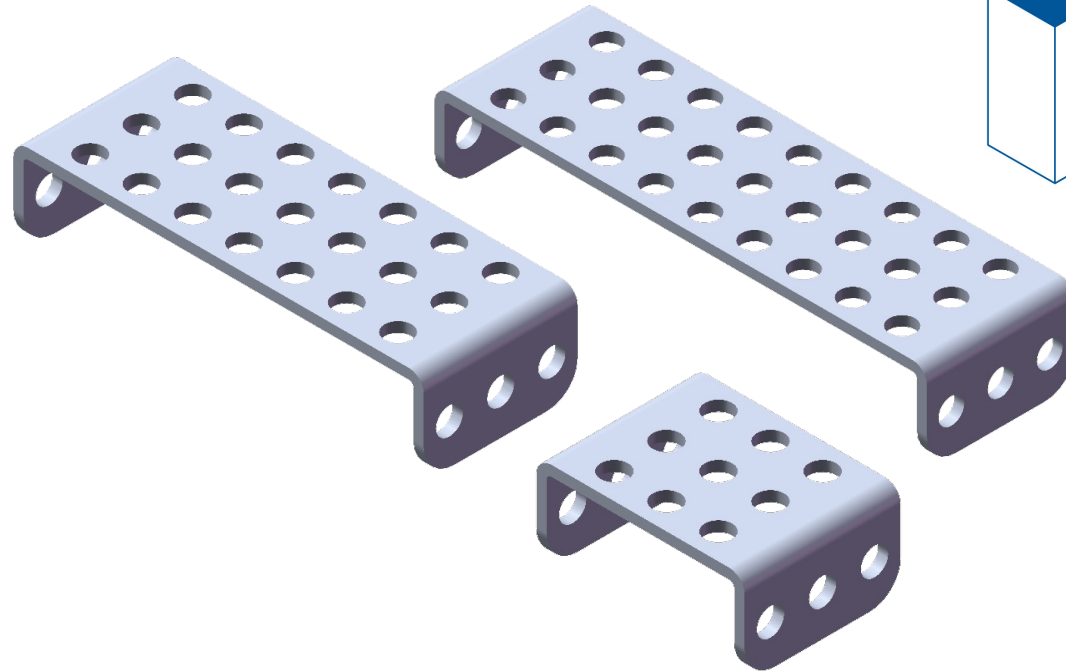


# Plate

Gusset Plate

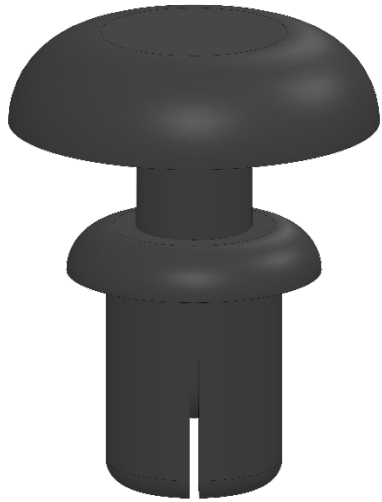


Flanged Plate

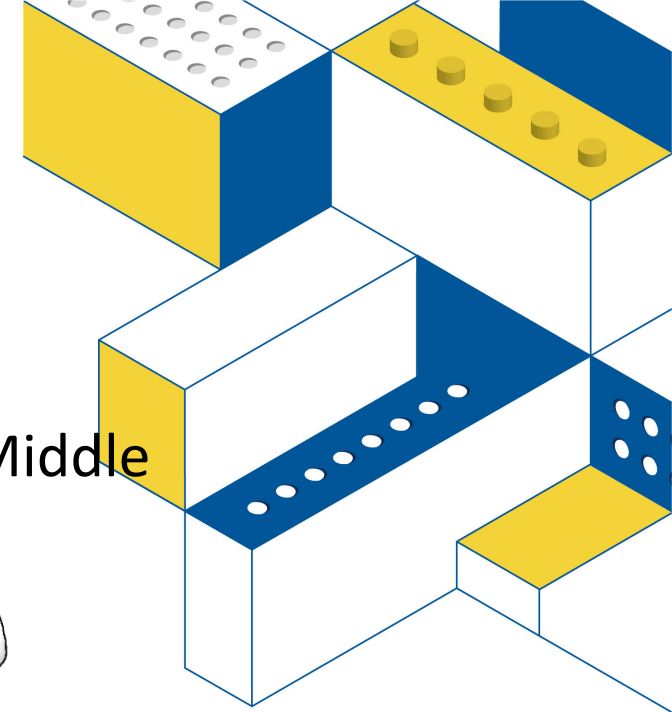
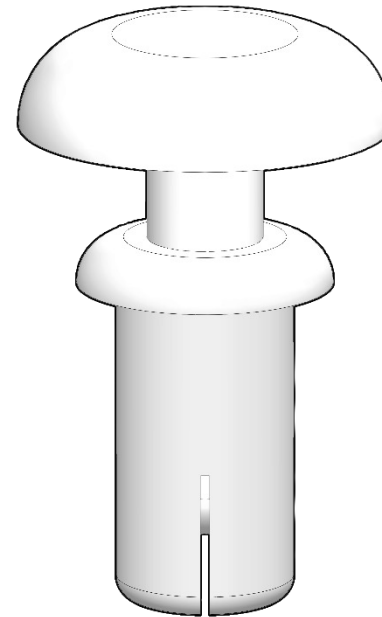


# Fastener

Quick Connector - Short



Quick Connector - Middle



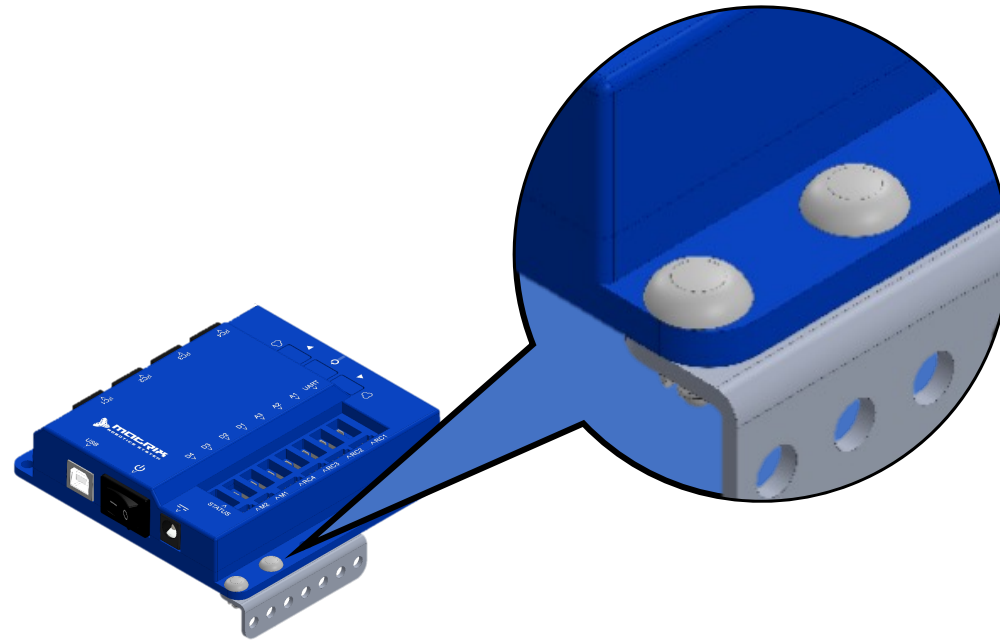
# Assembly technique



Black Short Fastener : Connect two pieces.

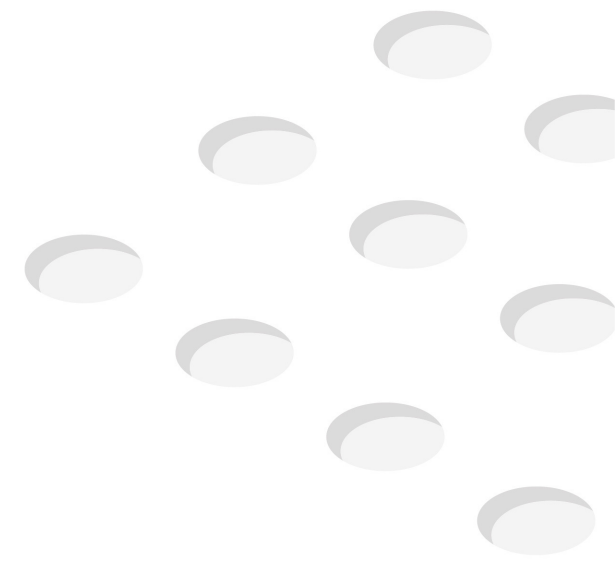
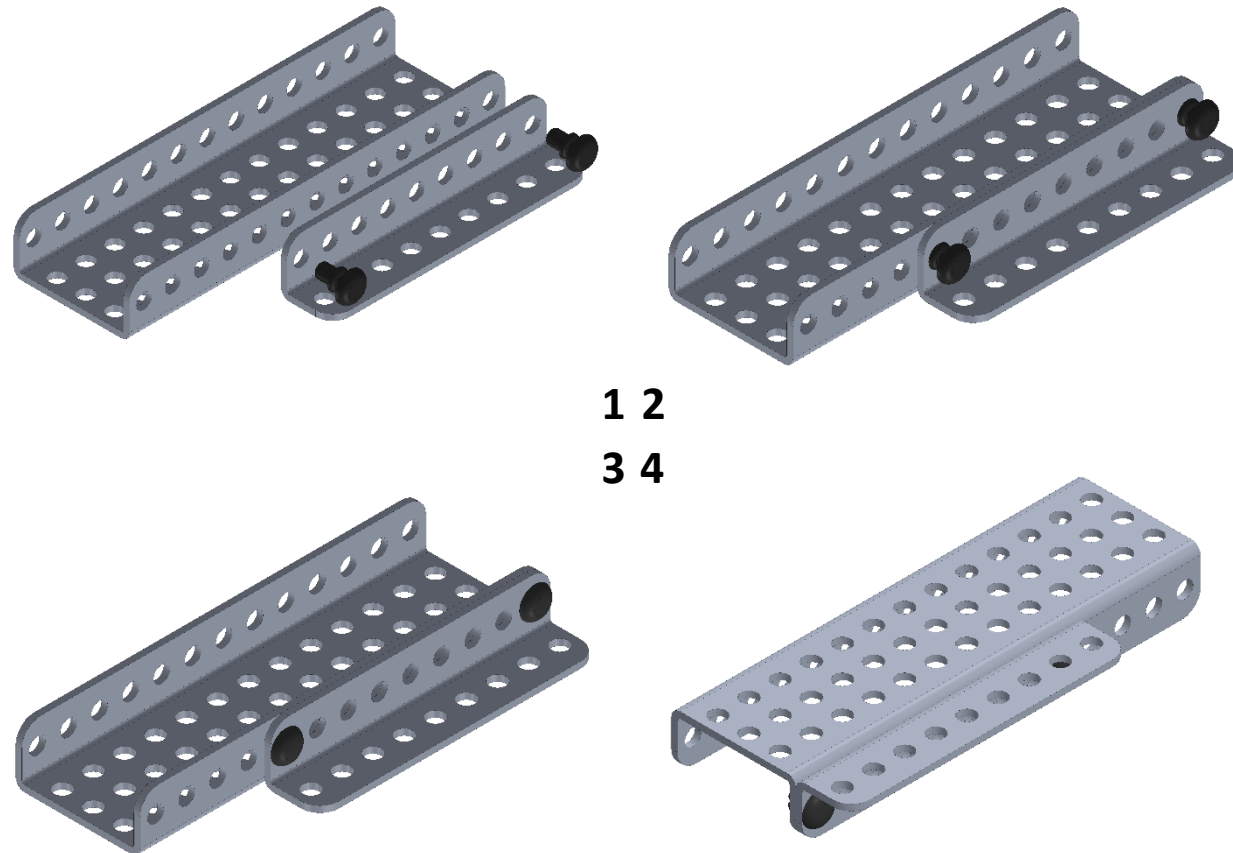
White Medium Fastener : Connect three layers of metal parts or for thicker plastic parts.

Black Long Fastener : Connect LEGO Technic parts.



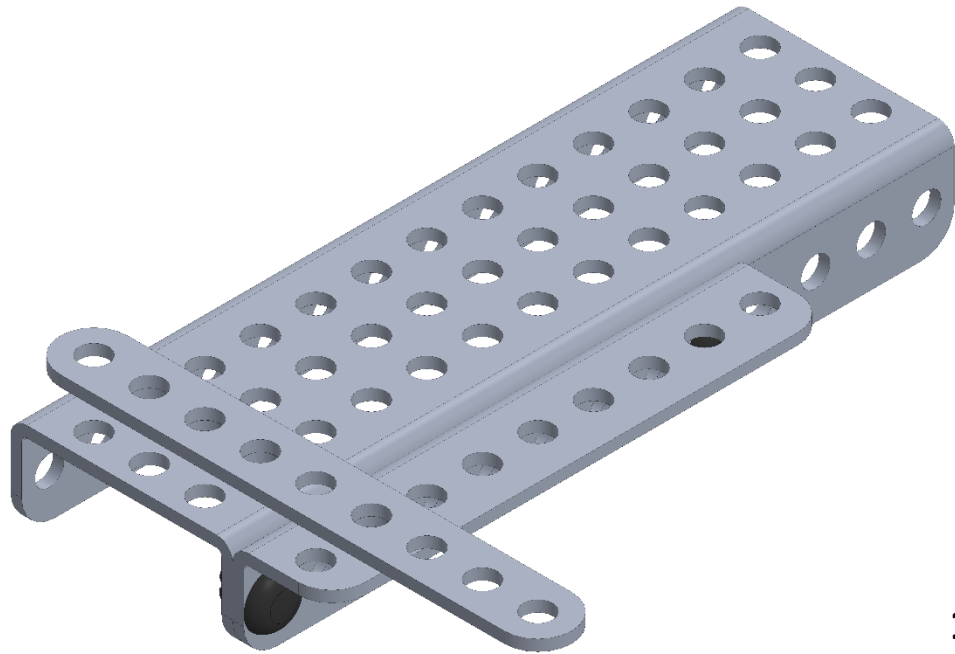
# Assembly technique

Connect two pieces with short connector.

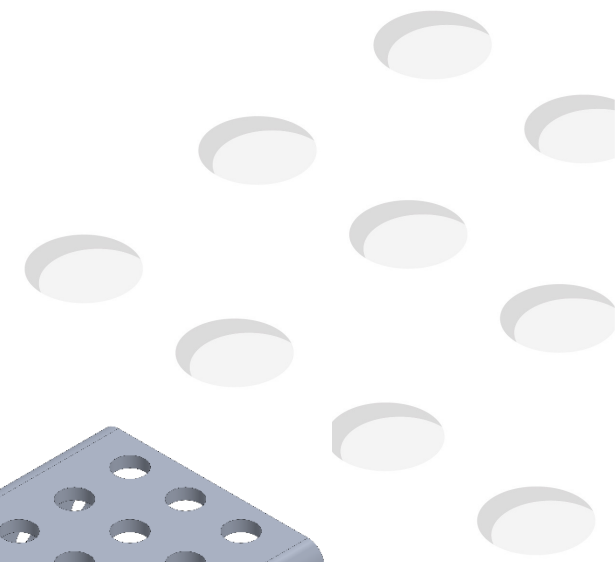
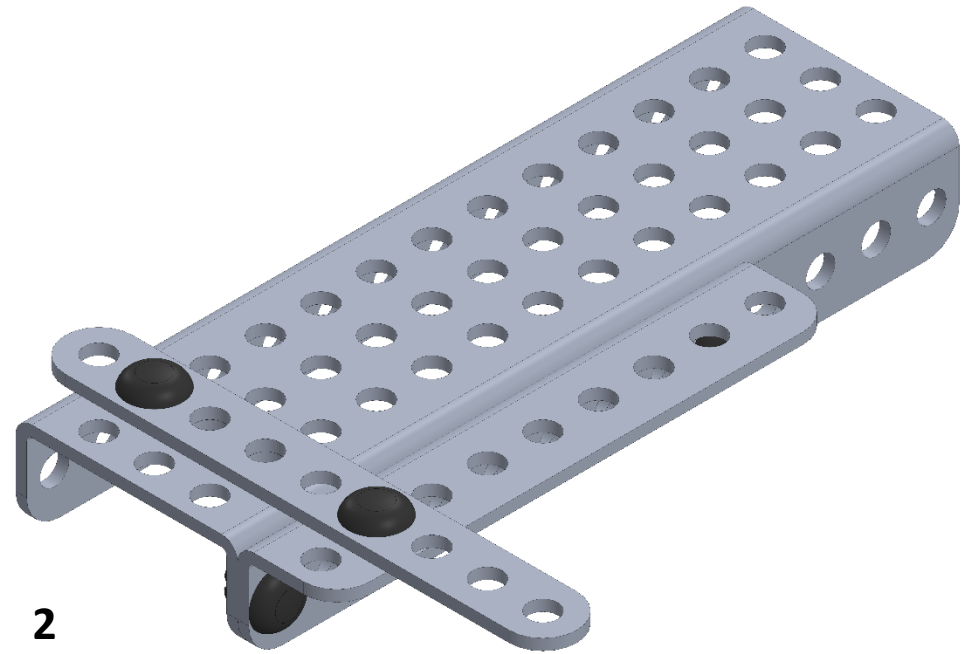


# Assembly technique

Continuable on the same plane

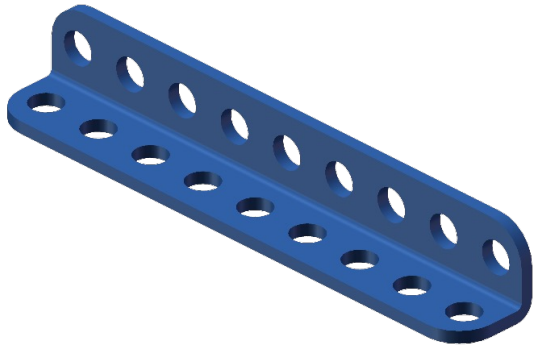


1 2

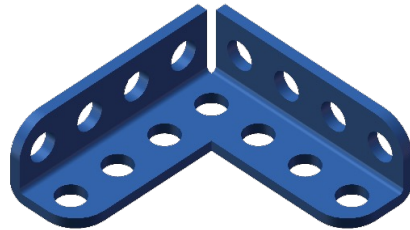


# Joiner

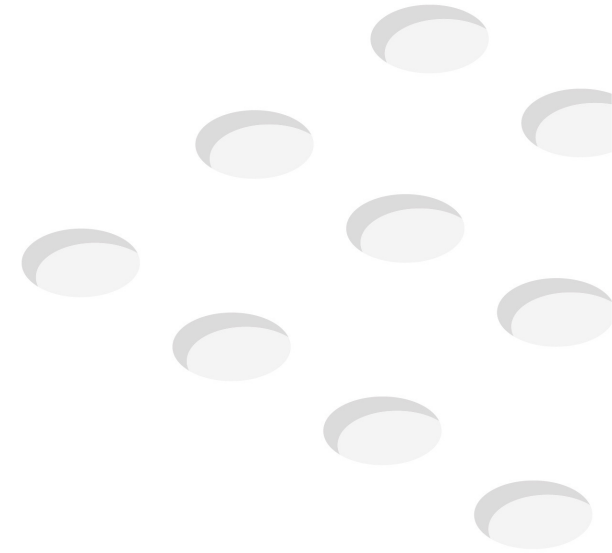
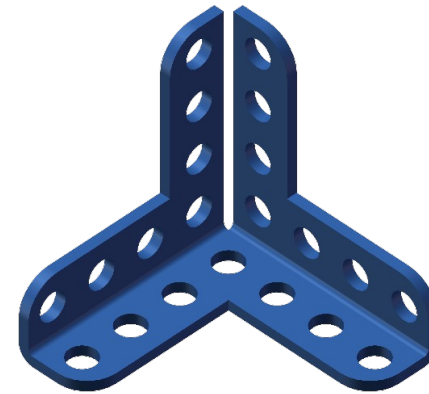
1D



2D



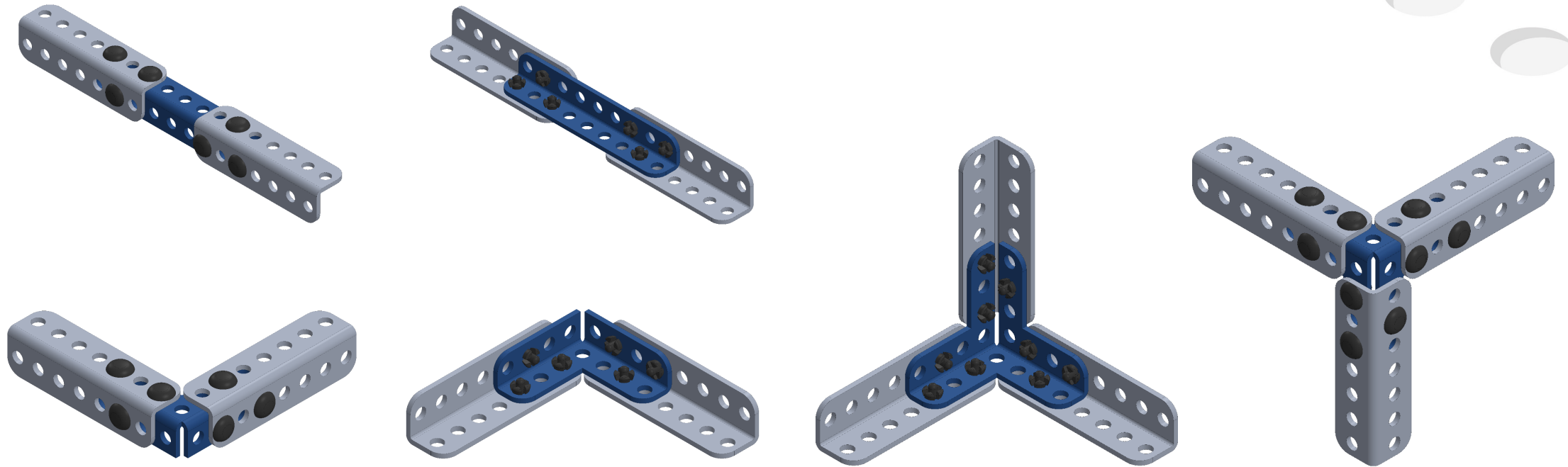
3D





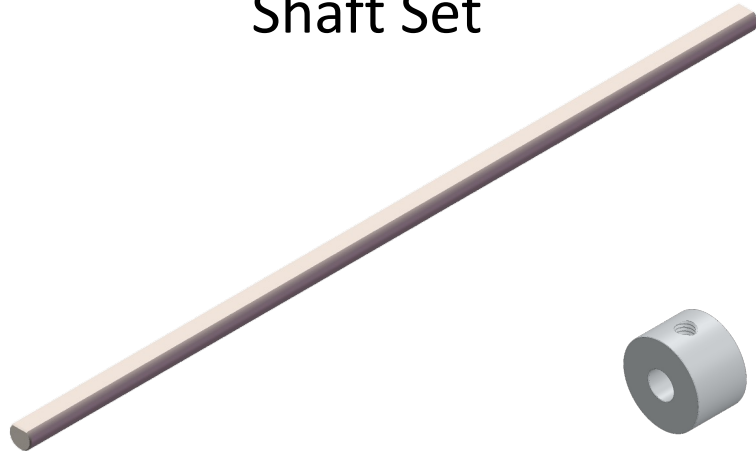
# Assembly technique

Blue Joiner is used for inside connection



# Motion Parts

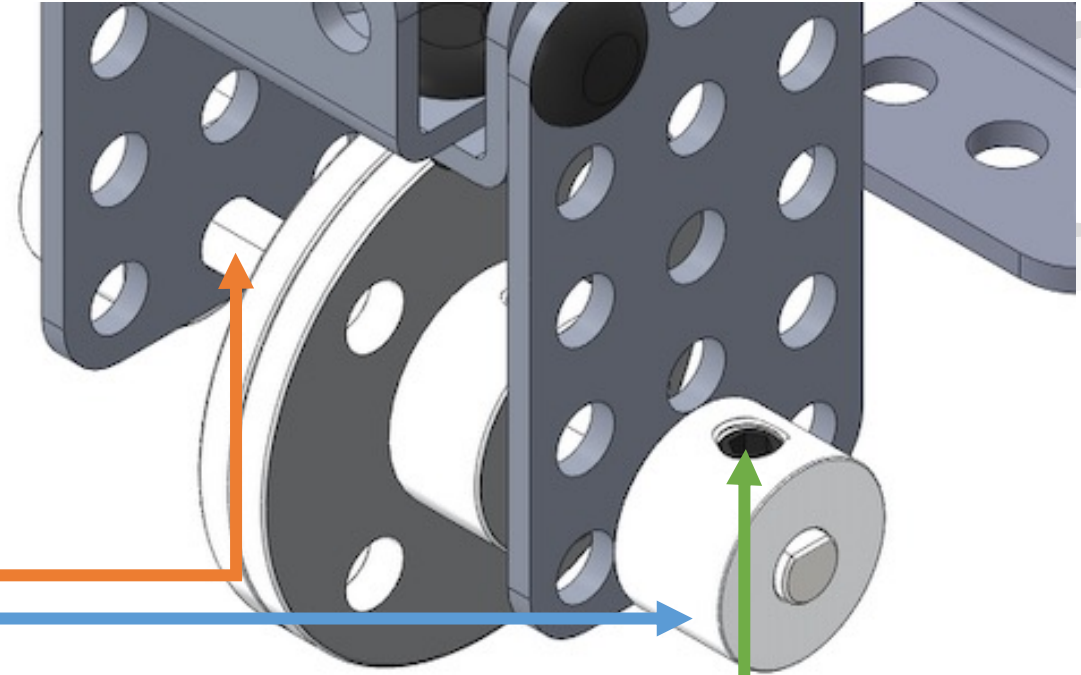
## Shaft Set



D Shaft

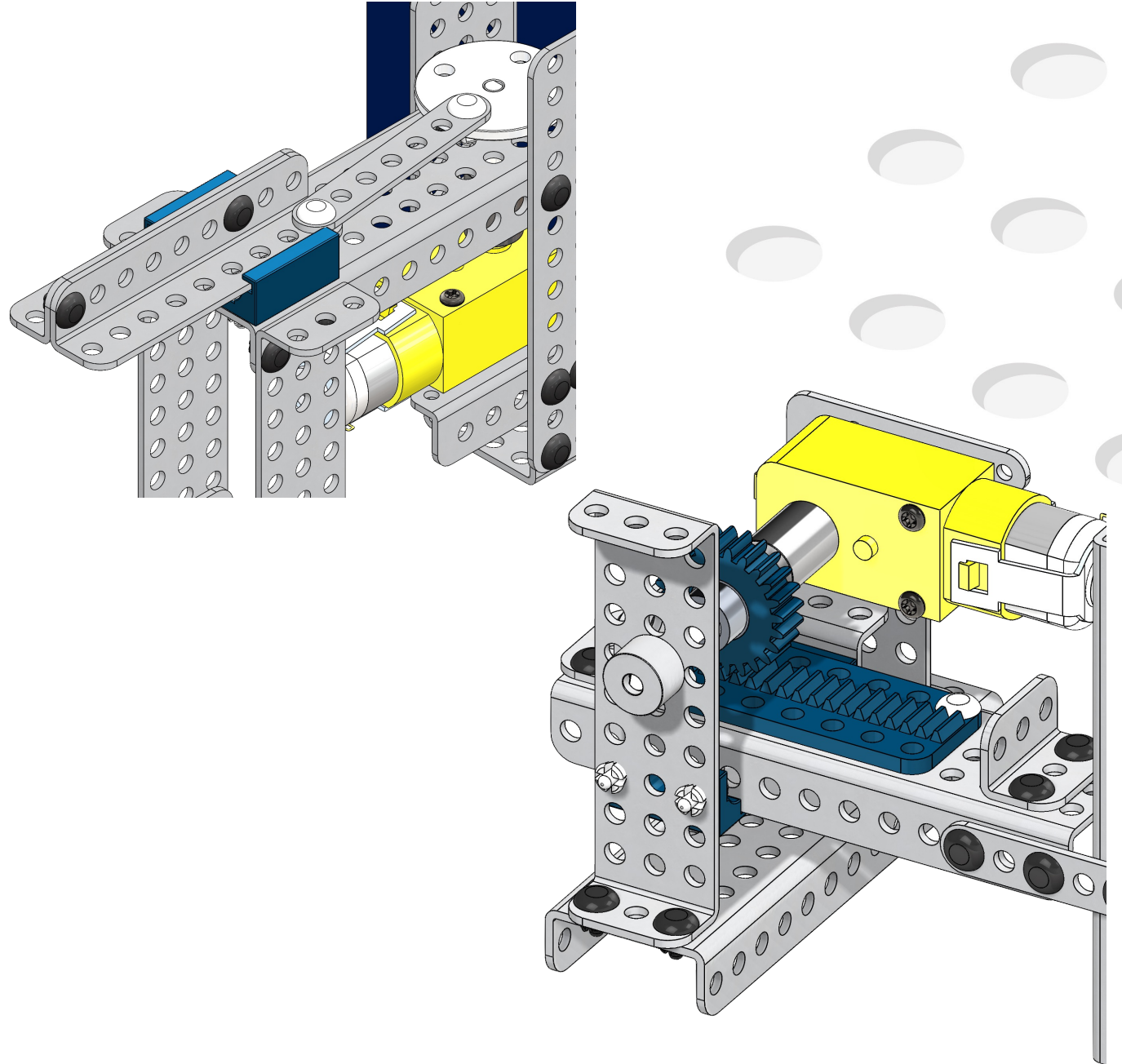
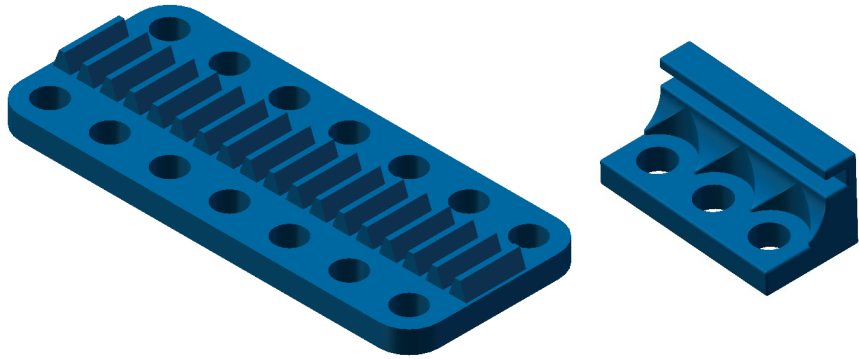
Axle Collar

Flat Point Set Screw



# Motion Parts

## Rack & Slide



# Motion Parts

## Gears

